



One
Adoption
Agency
WEST YORKSHIRE

One Adoption West Yorkshire Quarterly performance report

**2021 – 2022
April to June**

Introduction/summary

This is the first quarter report for 2021-22, providing an update on One Adoption West Yorkshire.

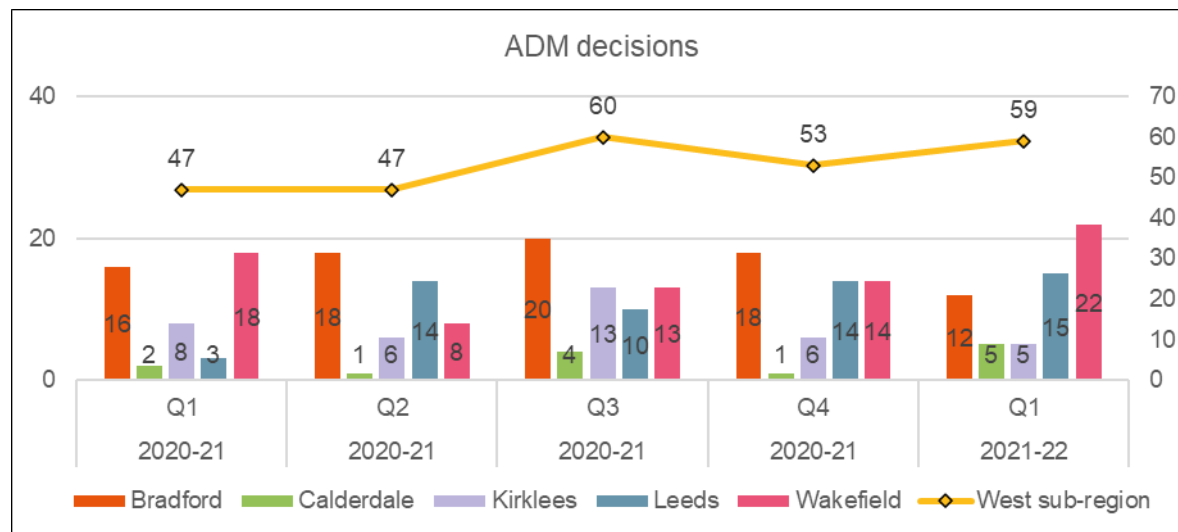
This report is based in the premise of how much work has been undertaken in the period, how well and what difference has it made. The report is a simple and concise report, with detailed tables in appendix. The report contains a number of tables and charts.

Children

This section of the report provides headline figures relating to children and young people at various stages of the adoption process within West Yorkshire. Greater detail, including a breakdown by the five local authorities, is contained within the graphs on the following page and Appendix one. The figures in bold are for the current quarter and those in brackets are for the same quarter of the previous year.

How much did we do?	How well did we do it?
<p>During the quarter</p> <ul style="list-style-type: none"> • 357 (274) children left care, 40 (21) were adopted <i>During 2020/21 157 children were adopted, average 39 per quarter</i> • 59 (47) children had an ADM decision made <i>During 2020/21 207 children had ADM decision made, average 51 per quarter</i> • 49 (32) placement orders were granted <i>During 2020/21 179 placement orders were granted, average 45 per quarter</i> • 48 (32) children were matched to an adoptive family – 8 (7 inter agency placements 17% (22%)) <i>During 2020/21 183 children were matched, average 46 per quarter</i> • 47 (36) children were placed with an adoptive family <i>During 2020/21 184 children were placed, average 46 per quarter</i> • 2 (8) children with new EPP decision <i>During 2020/21 21 children had a new EPP decision, average 4 per quarter</i> • 2 (5) children in new EPP (placed in EPP) <i>During 2020/21 19 children were placed in new EPP, average 4 per quarter</i> • 6 (11) Children had a change of plan away from adoption – see Appendix One, Table A5a for reasons <i>During 2020/21 56 children had a change of plan away from adoption, average 14 per quarter</i> • 4 (0) Child had an adoption disruption <i>During 2020/21 2 children had an adoption disruption, average 0.5 per quarter</i> 	<p>How well did we do it?</p> <p>For the 40 (21) children who were adopted during quarter 1 2021/22, it took an average of:</p> <ul style="list-style-type: none"> • 519 (486) days between a child entering care and moving in with their adoptive family - A1 indicator (National Indicator is 426 days) • 501 days between a child entering care and moving in with their adoptive family – adjusted for those adopted by their foster carers – A10 indicator • 228 (220) days between a local authority receiving court authority to place a child and the local authority deciding on a match to an adoptive family (National indicator is 121 days) (England average is 178) • 16 (11) were placed within 426 days of entering care, this is 40% (52%) • 10 (5) were matched within 121 days, this is 25% (24%) <hr/> <p>For the 47 (36) children who were placed during quarter 1 2021/22, it took an average of:</p> <ul style="list-style-type: none"> • 551 (566) days between a child entering care and moving in with their adopter family – A1 indicator • 551 days between a child entering care and moving in with their adoptive family – adjusted for those adopted by their foster carers – A10 indicator • 206 (282) days between a local authority receiving court authority to place a child and the local authority deciding on a match to an adoptive family • 20 (15) were placed within 426 days of entering care, this is 43% (42%) • 16 (7) were matched within 121 days, this is 34% (19%) • 11% (8%) of children leaving care were adopted, (England average is 12%)

<p>How much did we do?</p> <p><i>At the end of the quarter</i></p> <ul style="list-style-type: none"> • 192 (209) children have an ADM decision but not yet matched • 205 (223) children have an ADM decision but are not yet placed • 140 (155) children have a placement order but are not yet placed. Of these, 64 (71) have been waiting for at least 18 months since entering care. 73 (119) children have been waiting more than 121 days since the placement order was made • 42 (15) children with an ADM decision have a potential match identified, of which 25 have a match panel booked and 3 of the 42 children are placed EPP 	<p>How well did we do it?</p> <ul style="list-style-type: none"> • There is an increase, against the previous quarter, in the number of children who have an ADM decision but who are not yet matched and children who have an ADM decision but are not yet placed • There have been an increase in the number of children, from the previous quarter, who have a placement order and are not yet placed, there has been a slight increase of children who have been waiting for at least 18 months since entering care, 88% of the children have been waiting at least 18 months are children who wait longer for adoption • There is a slight increase in the number of children who have been waiting more than 121 days since the placement order was made. • There has been a decrease in the number of children placed EPP.
<p>What would we like to do better?</p> <ul style="list-style-type: none"> • We would like to ensure that children are placed in a timely manner and whilst we are able to do this for some children, others take longer • Continue to increase the number of children placed within the Yorkshire and Humber region • Continue to increase the number of children placed with in-house families • Continue to promote the use of early permanence placements where appropriate and to increase the number of early permanence placements 	<p>What difference did we make?</p> <ul style="list-style-type: none"> • A greater number of children were matched in quarter for adoption • A greater number of children were placed in quarter, 27 (57%) of the children are children who wait longer, 1 child is aged 5+, 21 children are part of a sibling group and 13 children are of Black, Asian, and minority ethnic backgrounds • Online profiling events have continued with two events taking place in the quarter, the second of these was a pre-recorded profiling event taking place over a week. Adjustments were made to the format of the event taking into account adopter feedback to make it more accessible. This event was a sibling event with 6 sets of siblings profiled. 8 expressions of interest were received, 2 of these progressed to linking visits with matched subsequently agreed to progress to adoption panel for match.



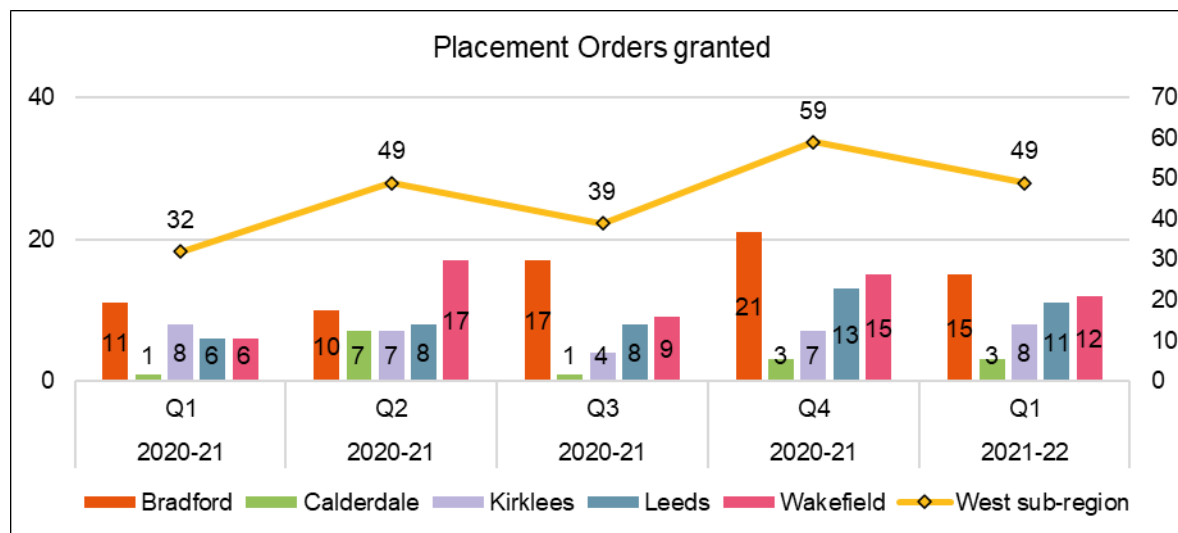
Commentary

This graph shows numbers of children who had an ADM decision over the last 5 quarters, thus showing figures for the same quarter in the previous year

Wakefield has seen a higher number of children with ADM decisions this quarter, as well as Leeds and Calderdale.

Bradford and Kirklees have seen a decrease this quarter.

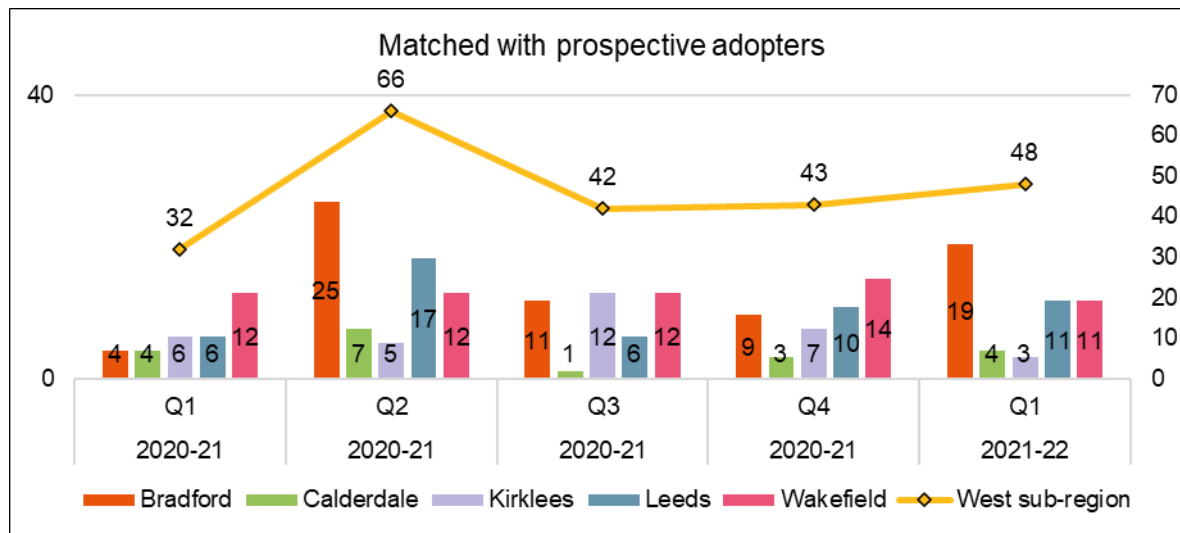
The overall number of ADM decisions has increased against the previous quarter.



Commentary

This graph shows numbers of children who had a placement order granted over the last 5 quarters, thus showing figures for the same quarter in the previous year

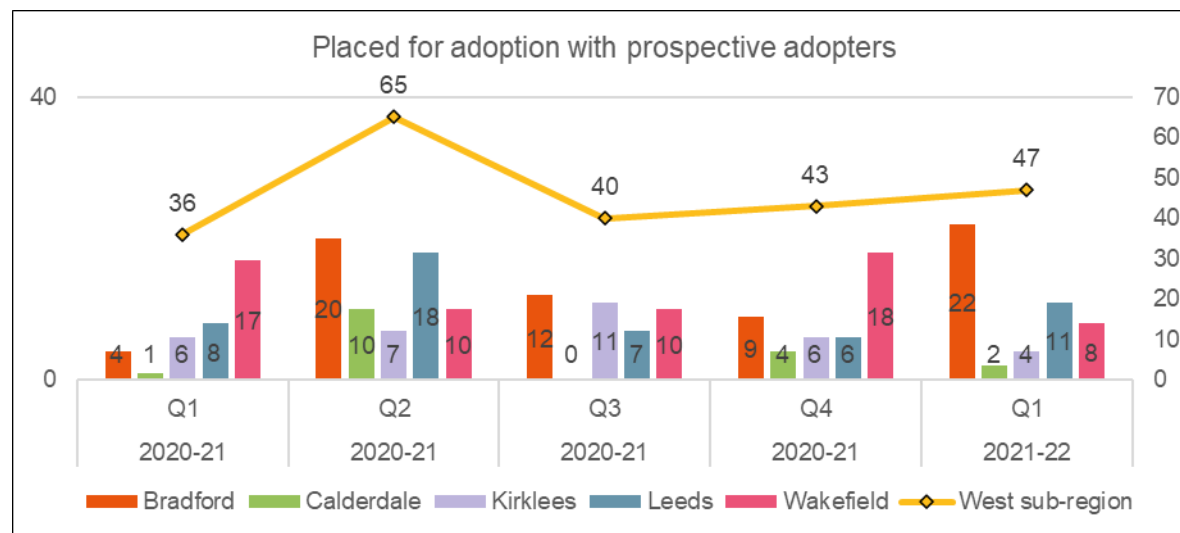
There has been an overall decrease in the number of placement orders granted in Q1. This is set against an increase in the previous quarter where delays in court were catching up.



Commentary

This graph shows numbers of children who were matched over the last 5 quarters, thus showing figures for the same quarter in the previous year

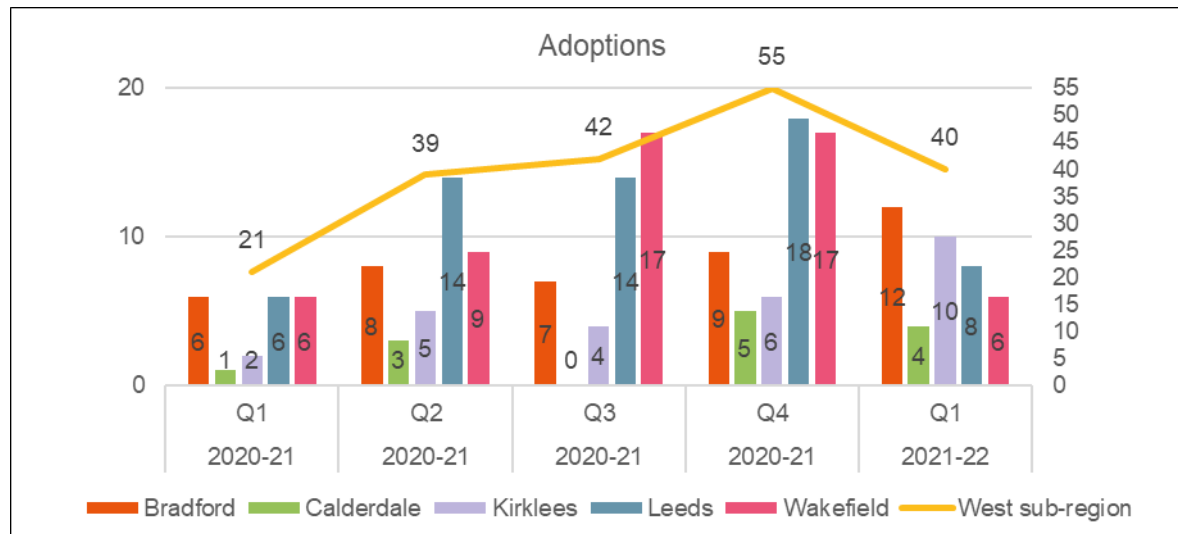
There has been an increase in the number of children matched with prospective adopters in Q1.



Commentary

This graph shows the number of children placed over the last 5 quarters, thus showing figures for the same quarter in the previous year.

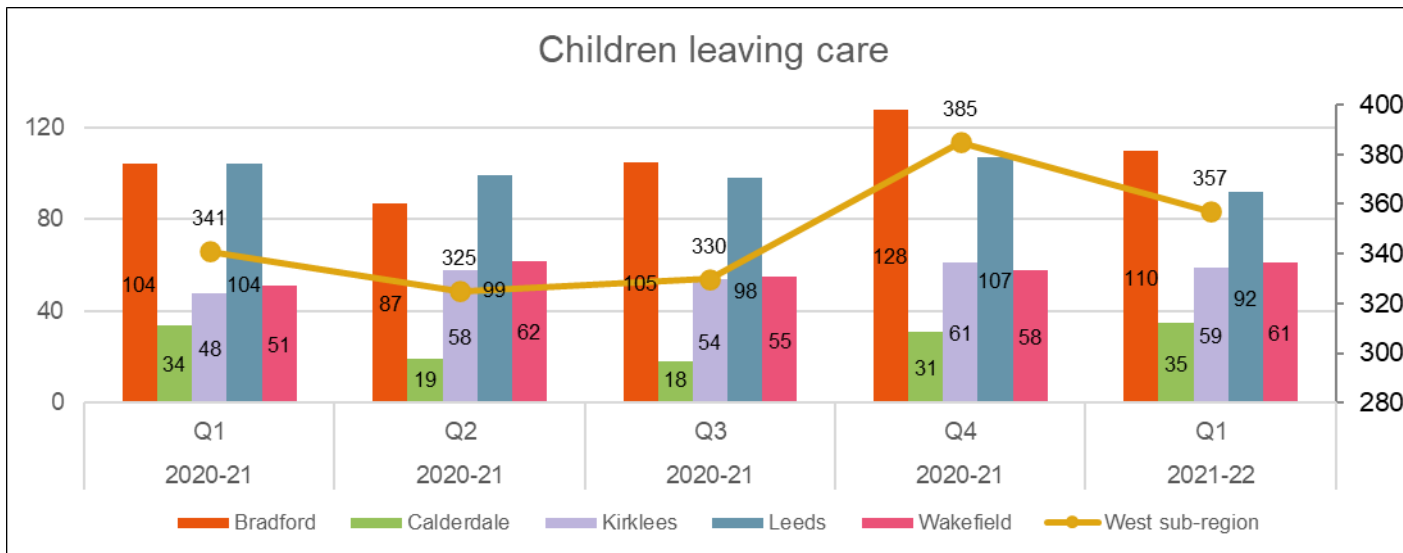
There has been an increase in the number of children placed with prospective adopters in Q1.



Commentary

This graph shows numbers of children who were adopted over the last 5 quarters, thus showing figures for the same quarter in the previous year

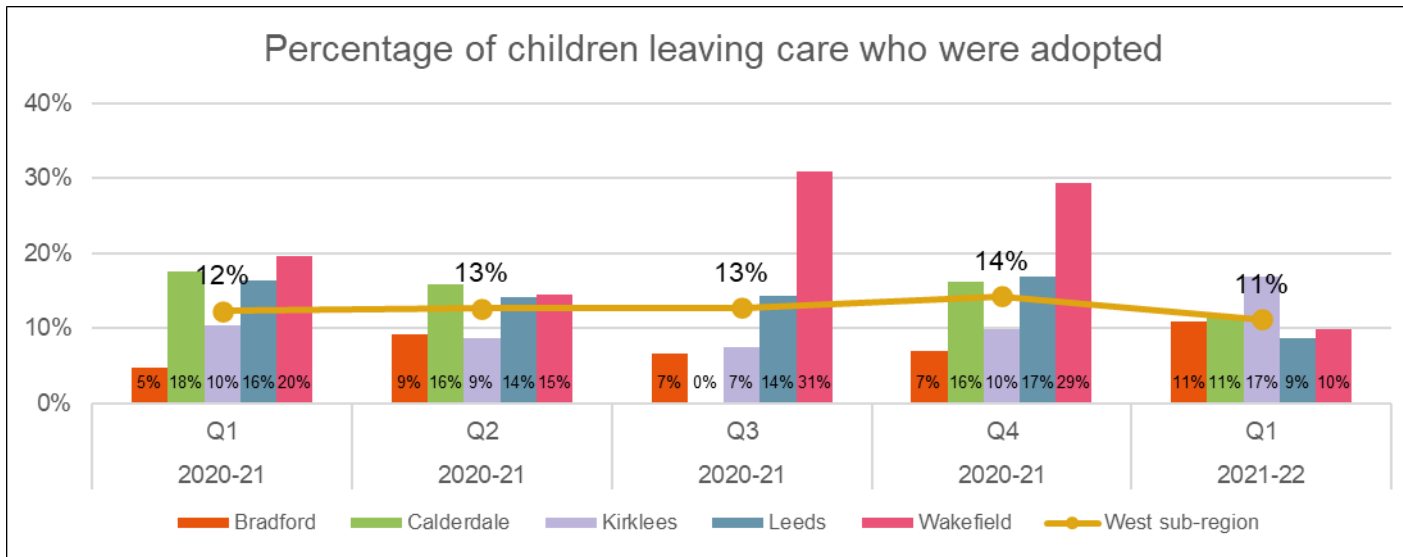
The number of adoption orders have reduced in Q1 and are broadly consistent with the number of adoption orders granted in Q2 and 3 in 2020-2021. There was a peak in Q4 due to delays in court being reduced.



Commentary

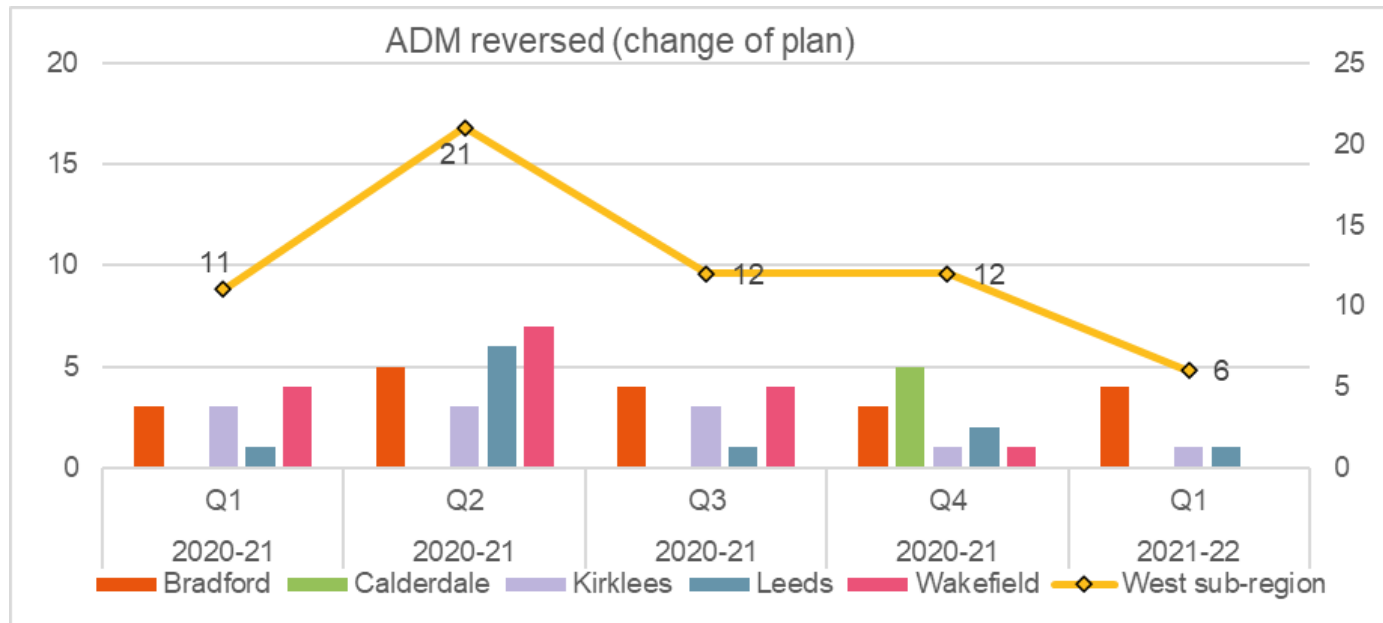
This graph shows the number of children leaving care over the last 5 quarters, thus showing figures for the same quarter in the previous year

The number of children leaving care has reduced against the previous quarters peak but continue to be above levels prior to the peak.



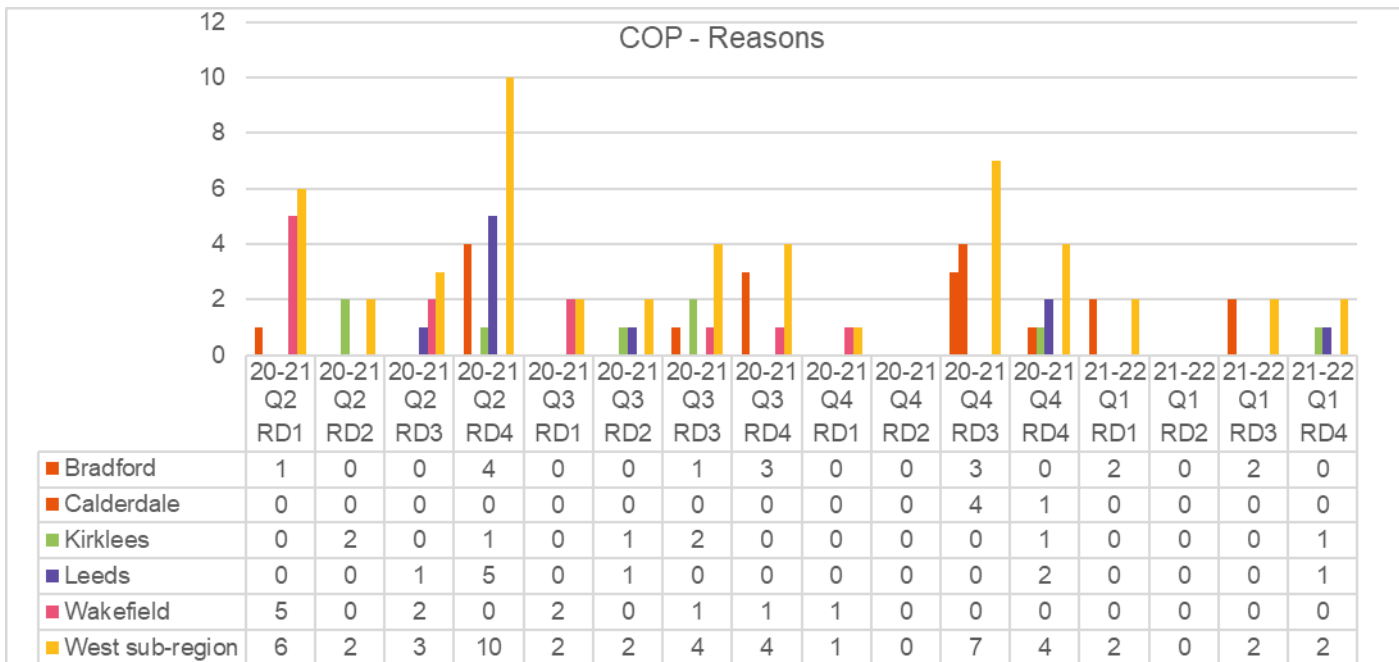
Commentary

This graph shows the percentage of children leaving care who were adopted in the last 5 quarters, thus showing figures for the same quarter in the previous year



Commentary

This graph shows the number of children who had a change of plan away from adoption over the last 5 quarters, thus showing figures for the same quarter in the previous year

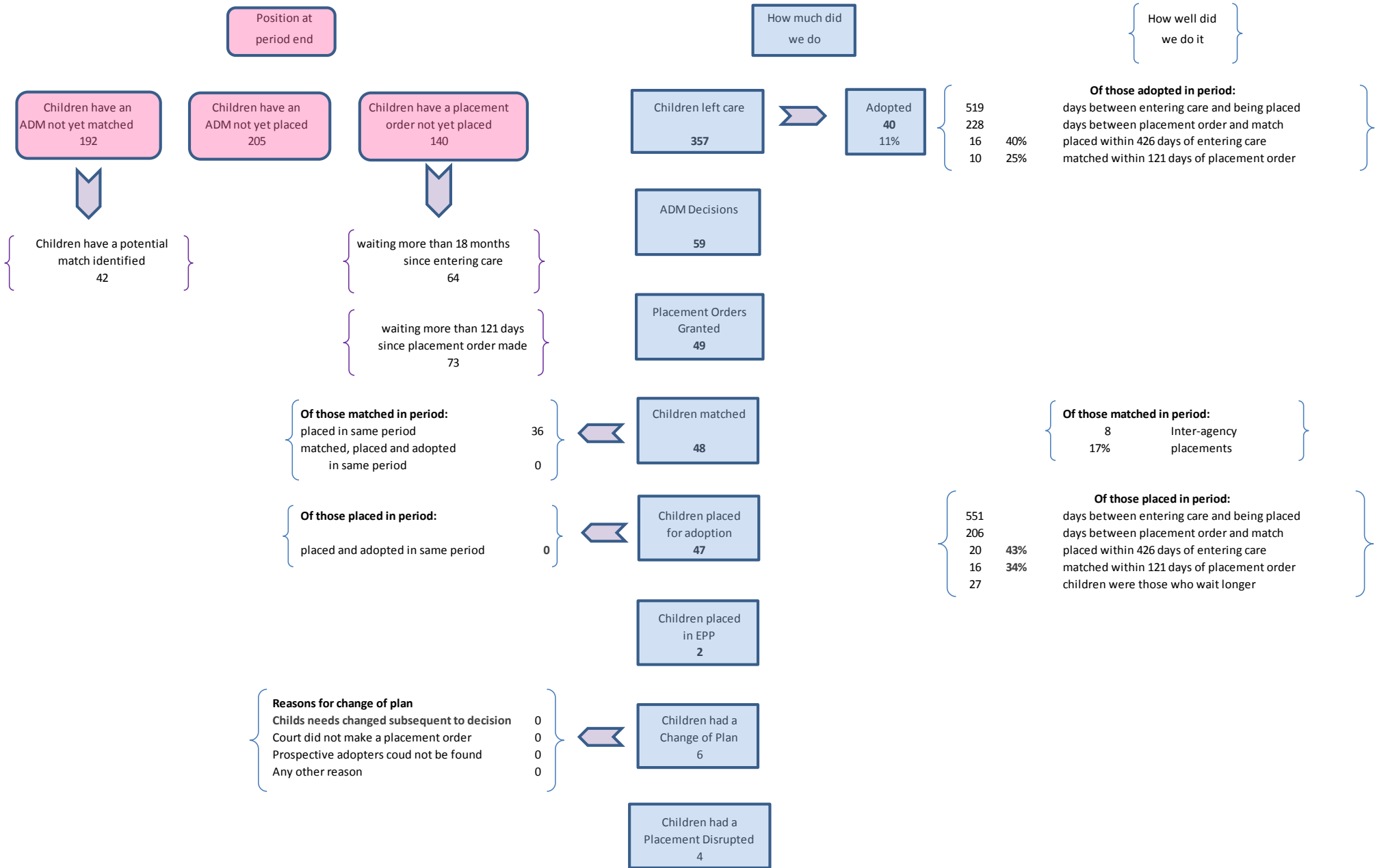


Commentary

This graph shows the reasons for the change of plan away from adoption. This is from Quarter 2 2020-21 to Quarter 1 2021-22 to show a four month trend.

- RD1 – The child’s needs changed subsequent to the decision
- RD2 – The court did not make a placement order
- RD3 – Prospective adopters could not be found
- R43 – Any other reason

Performance Overview – Children

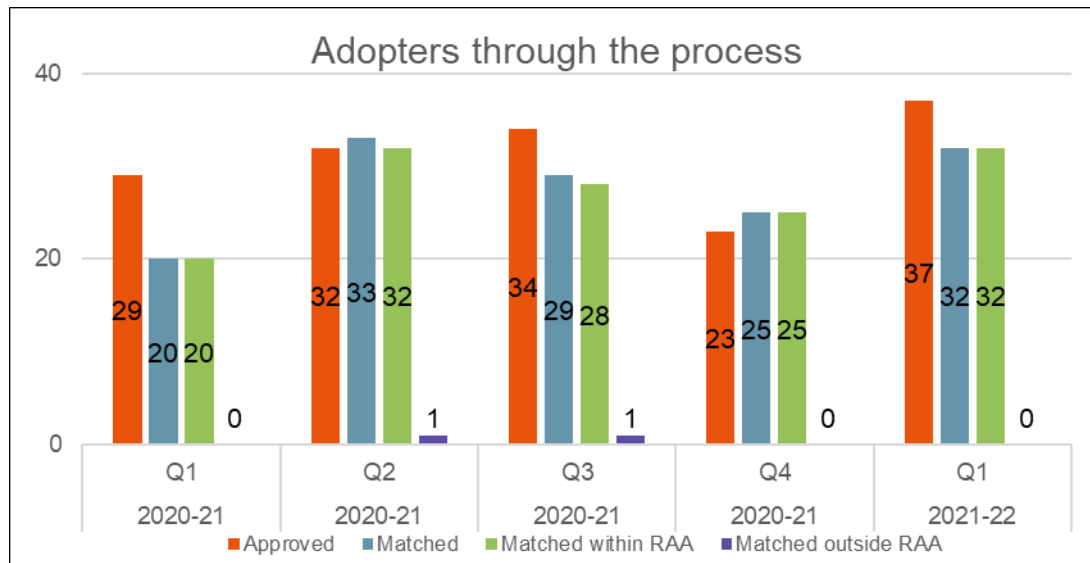


Adopters

This section of the report provides headline figures relating to prospective and approved adopters at various stages of the adoption process in One Adoption. Appendix two contains figures for the last 5 quarters to give comparison between same quarter in the previous year. Figures in bold are for current quarter, those in brackets are for the same quarter in the previous year.

How much did we do?	How well did we do it?
<p>During the quarter</p> <ul style="list-style-type: none"> • 136 (321) prospective adoptive families attended information sessions <i>During 2020/21 671 prospective adoptive households attended information sessions, average 168 per quarter</i> • 33 (45) prospective adoptive families started Stage 1 <i>During 2020/21 166 prospective adoptive families started Stage 1, average 42 per quarter</i> • 27 (11) prospective adoptive families attended preparation training <i>During 2020/21 130 prospective adoptive families attended preparation training, average 32 per quarter</i> • 27 (27) prospective adoptive families started Stage 2 <i>During 2020/21 127 prospective adoptive families started Stage 2, average 32 per quarter</i> • 37 (29) prospective adoptive families were approved, of these, 3 (7) families were Foster Carer Adopters <i>During 2020/21 118 prospective adoptive families were approved, average 30 per quarter</i> • 32 (20) prospective adoptive families were matched, of these, 0 (0) families were matched with children outside the RAA and 32 (20) were matched with children from within the RAA <i>During 2020/21 107 prospective adoptive families were matched, average 27 per quarter</i> • 28 (21) prospective adoptive families had a child(ren) placed, of these, 0 (0) families had children placed from outside RAA and 28 (21) had children placed from within the RAA <i>During 2020/21 106 prospective adoptive families had a child placed, average 27 per quarter</i> • 17 (12) adoptive families adopted a child/young person <i>During 2020/21 89 adoptive families adopted a child/young person, average 23 per quarter</i> • 10 (12) prospective adoptive families withdrew from the process <i>During 2020/21 55 prospective adoptive families withdrew from the process, average 14 per quarter</i> 	<p>How well did we do it?</p> <ul style="list-style-type: none"> • Of those prospective adoptive families who ended Stage 1, 36 (36) in the quarter, they were in Stage 1 for an average of 4 (3) months <ul style="list-style-type: none"> ○ 33% (47%) were within timescales (Lowest was 0 (0) month, highest was 13 (20) months) ○ Those still in Stage 1, 67 at the end of the quarter have been in Stage 1 for an average of 3 months ○ 44% are within timescales • Of those prospective adoptive families who ended Stage 2, 37 (29) in the quarter, they were in Stage 2 for an average of 4 (5) months <ul style="list-style-type: none"> ○ 81% (69%) were within timescales (Lowest was 1 (2) months, highest was 16 (8) months) ○ Those still in Stage 2, 37 at the end of the quarter have been in Stage 2 for an average of 2 months ○ 89% are within timescales <p>Of those approved 10 (8) months was the average time between registration of interest and approval.</p> <p>16 (12) adoptive families were matched within three months of their approval;</p> <p>16 (8) were matched after three months of their approval, of which 3 were EPP carers</p> <p>The average time taken from approval to matching was 6 (4) months</p>

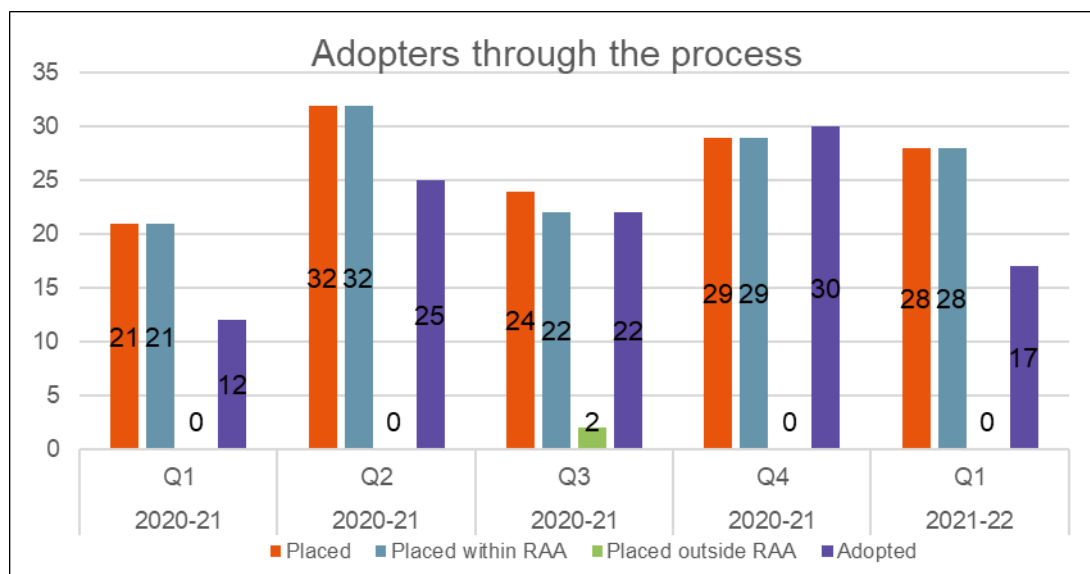
<p>How much did we do?</p> <p><i>At the end of the quarter</i></p> <ul style="list-style-type: none"> • Of the 105 (110) individual approved adopters (not yet matched), 46 (56) are female and 59 (54) are male. 22% (15%) are from a BME background • 104 (140) prospective adoptive families are not yet approved • 67 (100) prospective adoptive families are in stage one; 37 (40) are in stage two • 55 (57) approved adoptive families are yet to be matched Of which: <ul style="list-style-type: none"> ○ 8 (12) have been waiting more than six months – 4 are open to EPP ○ 18 (19) have a matching panel booked ○ 1 (0) has a match identified but no panel date booked <ul style="list-style-type: none"> • 36 approved adoptive families are yet to have a match identified • 1 adoptive family has a child placed in EPP – not yet formally matched • 16 (19) prospective adoptive families are on hold 	<p>How well did we do it?</p> <p>We have approved slightly fewer adopters than in the same quarter last year, However, we have increased the diversity within the adopters approved, which is a positive step towards our aim to recruit a more diverse range of adopters to meet the needs of West Yorkshire children.</p> <p>There are fewer families within the assessment process, in particular in stage one, which reflects fewer applicants waiting for allocation to a social worker to begin the stage two assessment.</p> <p>Fewer families have been waiting in excess of 6 months for a match.</p> <p>There are fewer families on hold than in the same period last year.</p>
<p>What would we like to do better?</p> <ul style="list-style-type: none"> • Move people through the adoption process in a more timely way. • Increase the number of available adopters, thus reducing the need for interagency placements. • Increase the diversity of adopters, in particular recruiting Black African and Black Caribbean adopters, to meet the needs of our children. • Increase the number of adopters open to siblings due to the demographic of the children needing adoptive families. • Increase the number of families open to considering children with a disability or children over the age of 3 years, as these children wait longer for families. 	<p>What difference did we make</p> <p>We have approved 8 more families than in the same period last year and 14 more than in the last quarter. This means that there are more families available for the children in West Yorkshire with a plan of adoption.</p> <p>32 families were matched in the quarter, an increase of 12 from the same quarter last year and 7 more than in the previous quarter. All the matches were with children from within the RAA which means that more children are being placed for adoption locally where they and their families can be well supported.</p> <p>We have increased the diversity of the available adopters to meet the needs of West Yorkshire children.</p>



Commentary

This graph shows numbers of adopters going through the process from 2020-21 Quarter 1 through to 2021-22 Quarter 1

This provides a comparison of the same quarter in the previous year; there has been an increase in adopters approved this quarter, along with an increase in families matched.

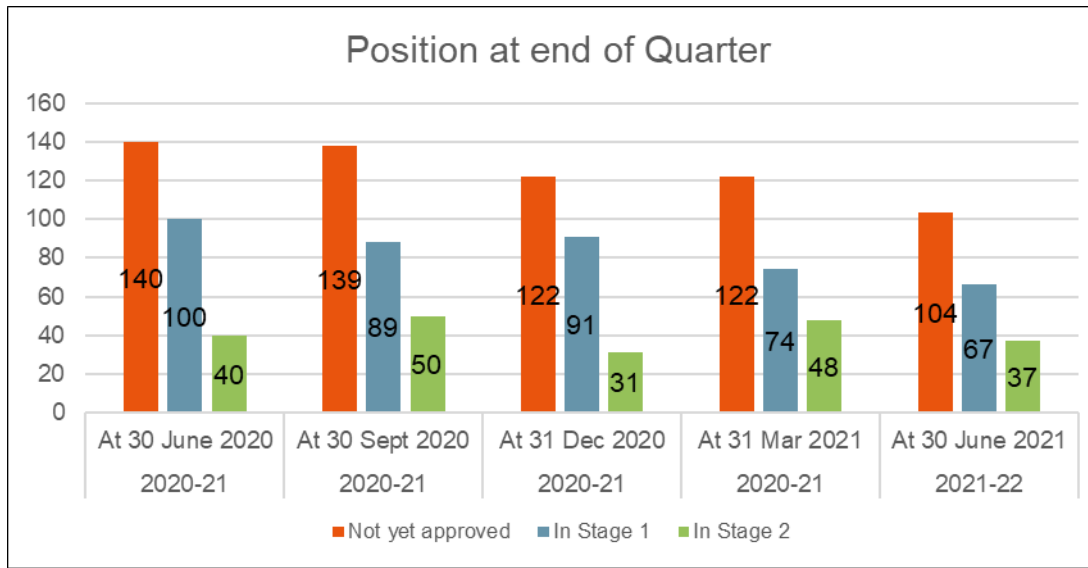


Commentary

This graph shows numbers of adopters going through the process from 2020-21 Quarter 1 through to 2021-22 Quarter 1

This provides a comparison of the same quarter in the previous year, with the number of children placed remaining consistent with the previous quarter and higher than the same period last year.

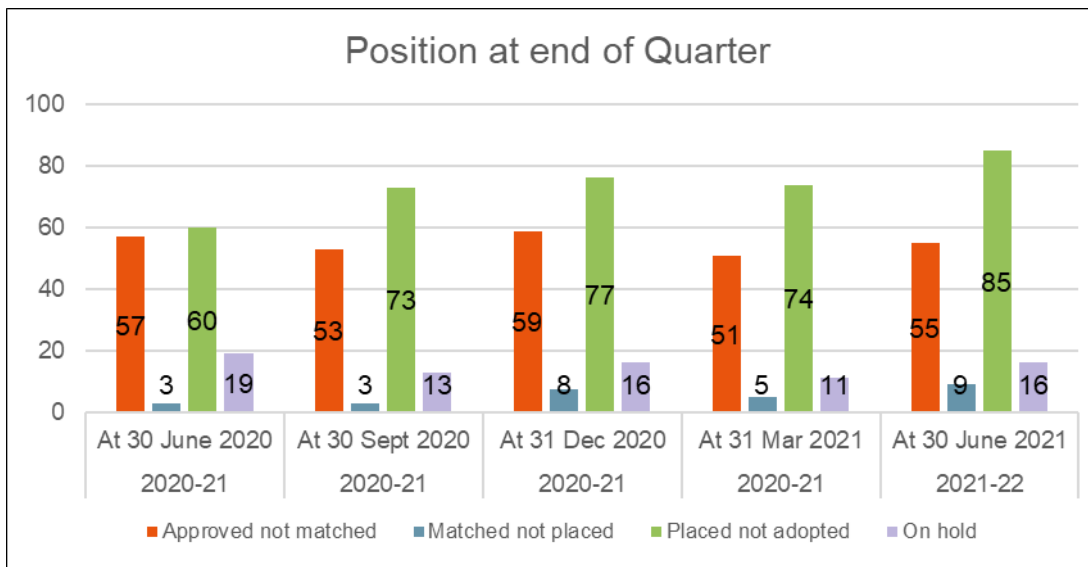
The number of the families obtaining an adoption order has fallen this quarter, but is higher than that same quarter last year.



Commentary

This graph shows the number of adopters at various stages in the process at the end of each quarter. It shows the last 5 quarters so we can compare the same quarter in the previous year.

There has been a decrease in the number of adopters within the assessment process when compared to last year, though the numbers in stage two remains relatively consistent. The capacity of information events has been increased to ensure sufficient enquiries from prospective adopters are received and progressed. Online marketing activity has been increased to encourage more people to start the adoption process.



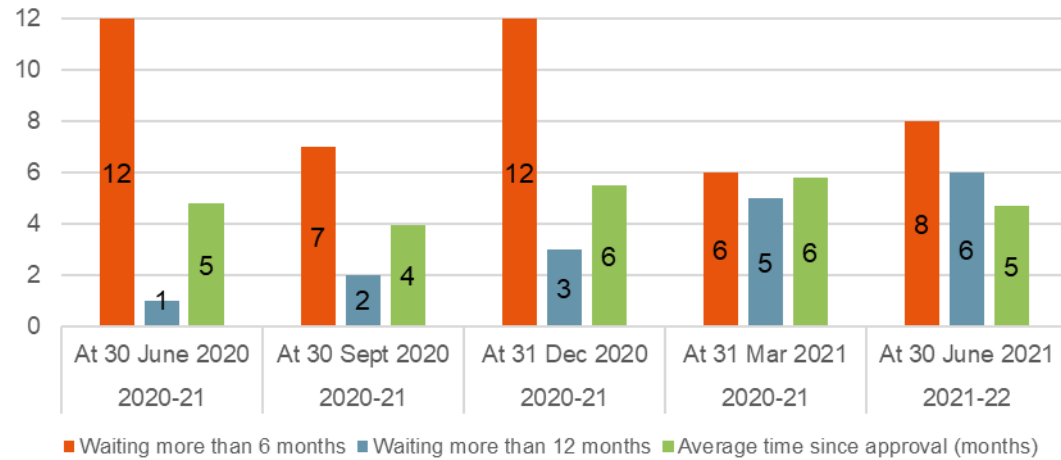
Commentary

This graph shows the number of adopters at various stages in the process at the end of each quarter. It shows the last 5 quarters so we can compare the same quarter in the previous year.

The number of adopters with children placed and not yet adopted remains high, and has increased with a number of children recently placed for adoption, though we are starting to see improvements in court timetabling of adoption hearings.

The number of approved adopters remains consistent.

Position and timelines at end of Quarter



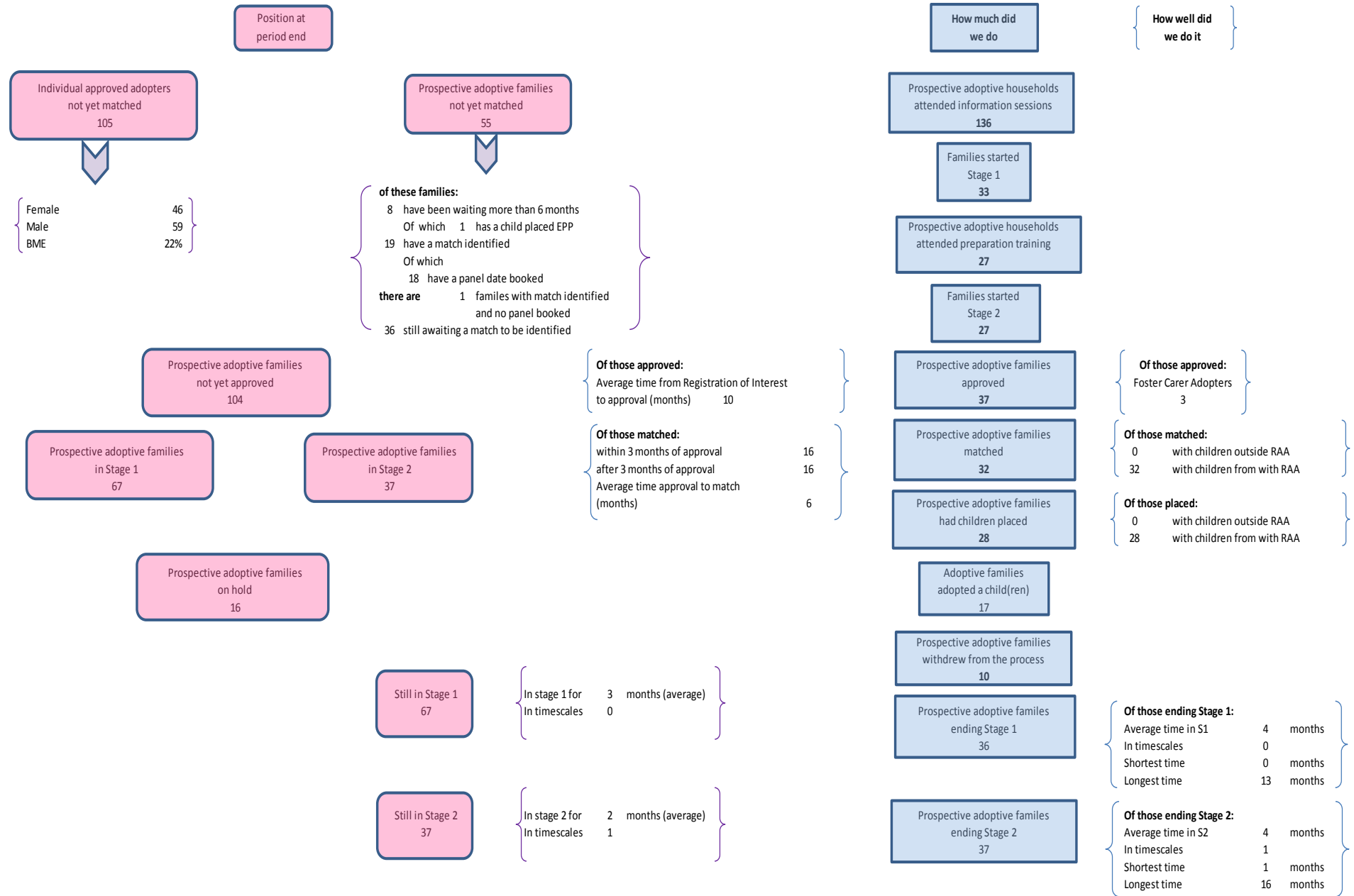
Commentary

This graph shows the number of adopters approved and not matched at the end of each quarter and the timeliness. It shows the last 5 quarters so we can compare the same quarter in the previous year.

There has been a slight increase this quarter of adopters waiting more than 6 months to be matched. Though this remains lower than in the same period last year. Some of the adopters who are not yet matched have children placed with them via Early Permanence and the match cannot progress until a Placement Order is made. For all adopters who have been approved for three months or more national searches are taking place to identify a match with a child who meets the criteria they have specified.

The average time adopters wait following approval for a match has decreased.

Performance Overview – Adopters



Snapshot Figures

This section of the report looks at characteristics of prospective adopters who are approved but not yet matched and those characteristics of children still waiting to be matched as at the end of the quarter.

Characteristics of those adopters who are approved and not yet matched

Ethnicity	Number of individuals
African	3
Any other Asian background	3
Any other Mixed background	1
Any other White background	10
Caribbean	1
Chinese	1
Indian	2
Pakistani	7
White and Black Caribbean	1
White British	72
White Irish	4
TOTAL INDIVIDUALS	105

Religion	Number of individuals
Christian	53
Hindu	2
Jewish	4
Muslim	10
No information available	6
No Religion	18
Other	12
TOTAL INDIVIDUALS	105

Characteristics of children who have a decision but not yet matched (192), of these, 128 have a Placement Order

Ethnicity	Number of children
African	2
Any other Black background	4
Any other ethnic group	12
Any other Mixed background	6
Any other White background	4
Gypsy/Roma	5
Information not yet obtained	1
Traveller of Irish Heritage	2
White and Asian	7
White and Black African	1
White and Black Caribbean	6
White British	140
White Irish	2
TOTAL INDIVIDUALS	192

Children who wait longer (more than one characteristic)	Number of children
Part of a Sibling Group	90
With a Disability	1
BME	47
Aged 5 years +	26
TOTAL INDIVIDUALS	164

36 Children have 2 of above characteristics
5 Children have 3 of above characteristics

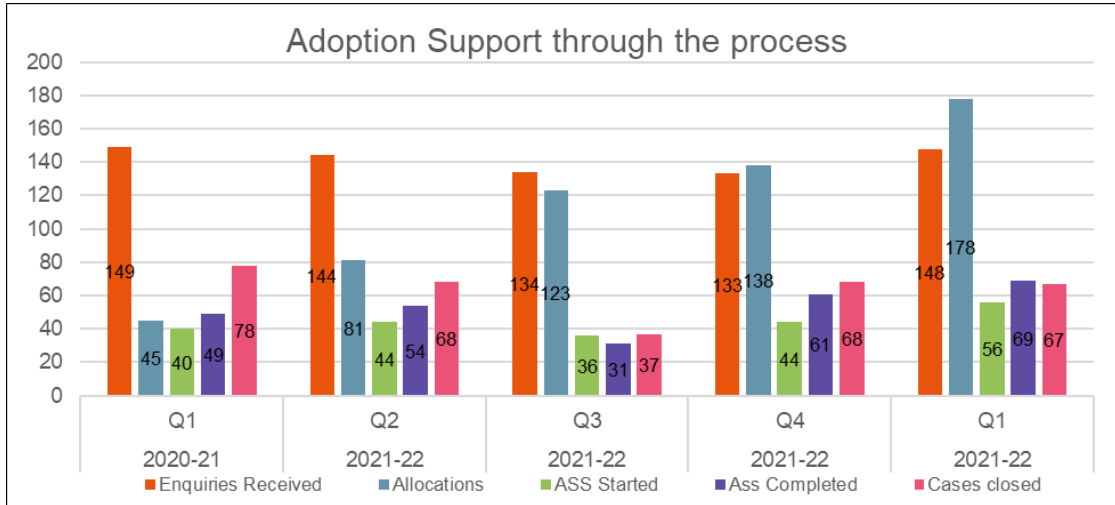
Of those above

ADOPTERS

Certain characteristics specified	Number of Households
Potential Match	19
Not specified any age group	17
Specified 0-4 years	32
Sibling groups	24
Specific Gender	9
Open to EPP	6

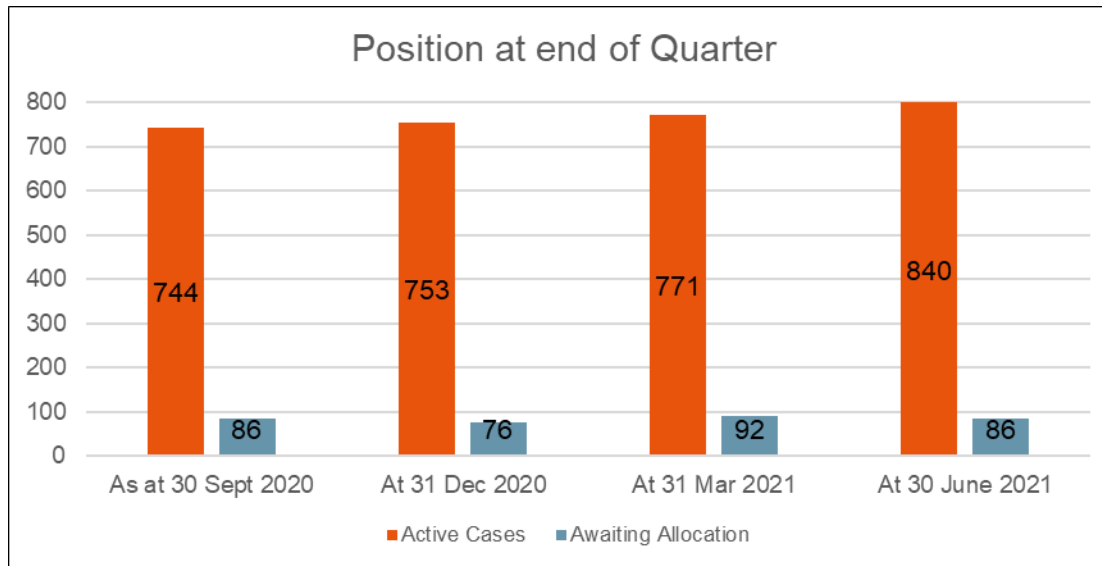
Adoption Support – to be further developed (Numbers in brackets are last quarters figures – unlike adopter and children figures)

<p>How much did we do?</p> <p><i>During the quarter</i></p> <ul style="list-style-type: none"> • 148 (133) Adoption Support enquiries received • 178 (138) cases were allocated • 56 (44) Adoption Support assessments were started • 69 (61) Adoption Support assessments were completed • 67 (68) Adoption Support cases were closed <p><i>At the end of the quarter</i></p> <ul style="list-style-type: none"> • 840 (771) Active cases • 86 (92) cases were awaiting allocation 	<p>How well did we do it?</p> <ul style="list-style-type: none"> • For those cases allocated in the quarter it took an average of 213 (192) days • For those assessments completed in the quarter it took an average of 81 (114) days from start of assessment to completion (this is for OAWY workers only) • Of those cases closed in quarter <ul style="list-style-type: none"> ○ 1 (2) was aged 0-23 months ○ 0 (2) were aged between 2-4 years ○ 52 (41) were aged 5+ years ○ 14 (22) were adults <p>Of the active cases at the end of the quarter – xx cases do not show a breakdown</p> <ul style="list-style-type: none"> ○ 9 (9) were aged 0-23 months ○ 128 (117) were aged 2-4 years ○ 616 (570) were aged 5+ years <ul style="list-style-type: none"> ▪ 433 (406) were aged 5-11 years ▪ 183 (164) were aged 12-17 years ○ 87 (75) were adults
<p>What would we like to do better?</p> <ul style="list-style-type: none"> • Improve on timeliness of allocation to a worker where needed; the Triage system being piloted in the Leeds team is showing early signs of being effective in relation to this. • Continue to improve on the length of time an assessment of support needs takes. • Have a clear core offer of support for adopted young people aged 17+ years. 	<p>What difference did we make?</p> <ul style="list-style-type: none"> • We have continued work on ensuring that support plans are focused and led by outcomes the family/young person has defined. • We have continued to make use of the Adoption Support Fund in the quarter, including being able to make applications against in-house provision meaning that a small amount of income has been generated. • We have begun to work more of a 'hybrid' model of work with children and families via a combination of face to face meetings and via digital platforms. This has meant a better use of targeted support (face to face) and worker time (when digital contact used).



Commentary

This graph shows the number of Adoption Support enquiries and through the process



Commentary

This graph shows the number of adopters at various stages in the process at the end of each quarter 2020-21 from Quarter 2, showing last 4 quarters

Appendix One

This appendix contains a range of measures related to prospective adopters progressing through the approval and adoption process.

Table A9: individuals and families progressing through the approval and adoption processes

		Enquiries		Progress through the adoption process (Families)					
		Individuals	Families	Start Stage 1	Start Stage 2	Approved	Matched	Placed	Adopted
2020-21	Q1		107	45	45	29	20	21	12
2020-21	Q2		121	42	42	32	33	32	25
2020-21	Q3		34	39	39	34	29	24	22
2020-21	Q4		85	40	40	23	25	29	30
2021-22	Q1		53	33	33	37	32	28	17

Table A10: snapshot numbers of prospective adopters at different stages of the approval process

	Prospective adoptive families				Approved adoptive families waiting		
	Prospective adoptive families not yet approved	In Stage 1	In Stage 2	On hold	Approved adoptive families waiting to be matched	Approved adoptive families waiting to be matched for more than 6 months	Average time since approval (months)
At 30 June 2020	140	100	40	19	57	12	5
At 30 Sept 2020	139	89	50	13	53	7	4
At 31 Dec 2020	122	91	31	16	59	12	6
At 31 Mar 2021	122	74	48	11	51	6	6
At 30 June 2021	104	67	37	16	55	8	5

Appendix three

Children

Of the 40 children adopted:

it took 519 days from entering care to being placed (A1 indicator)

18 of the 40 children took more than 500 days from entering care to being placed

If these 18 children were excluded from the calculation the average would be 368

30 of the 40 children took more than 121 days from placement order to being matched

If these 30 children were excluded from the calculation the average would be 94

32 of the 40 children were those who wait longer

7 were aged 5+ years

26 were part of a sibling group

11 were BAME

A10 indicator was 501 days between entering care and moving in with their adoptive family, adjusted for those adopted by their foster carers

Of the 47 children who were placed:

It took 551 days from entering care to being placed (A1 indicator)

20 of the 47 children took more than 500 days from entering care to being placed

If these 20 children were excluded from the calculation the average would be 362

30 of the 47 children took more than 121 days from placement order to being matched

If these 30 children were excluded from the calculation the average would be 81

27 of the 47 children were those who wait longer

1 was aged 5+ years

21 were part of a sibling group

13 were BAME

A10 indicator was also 551 days between entering care and moving in with their adoptive family, adjusted for those adopted by their foster carers for this cohort

Of the 48 children matched:

It took 525 days from entering care to being *matched*

19 of the 48 children took more than 500 days from entering care to being

If these 19 children were excluded from the calculation the average would be 337

19 of the 48 children took more than 121 days from placement order to being matched

If these 19 children were excluded from the calculation the average would be 80

25 of the 48 children were those who wait longer

2 aged 5+ years

21 part of a sibling group

12 BAME

Adopters

Of the 37 families approved, 3 were Foster Carer adopters

All 32 families matched were with children from within OAWY

All 28 families who had a child placed were with children from within OAWY

Those who ended Stage 1 (36), 24 families were in Stage 1 for more than 2 months

Of which 3 subsequently withdrew within the quarter, 3 went on hold and 1 was declined

Those who ended Stage 2 (37) 7 families were in Stage 2 for more than 4 months

Of which 1 was matched in quarter and 1 was matched and placed in quarter

Of those who took more than 3 months from approval to match (16), 3 were EPP adopters,

12 were subsequently placed within quarter, 2 went on hold post approval – 1 for 770 days and 1 for 333 days